

# Ballard Blessings

Following the example of our Lord Jesus Christ, we at Ballard First Lutheran affirm the dignity and worth of all people. We believe God calls us to be a community of grace, compassion, and justice. With St. Paul, we affirm that, in Christ, "There is no longer Jew or Gentile, there is no longer slave or free, there is no longer male and female; for all are one in Christ Jesus." (Gal. 3:28) We believe that the Gospel, that is, the good news of Jesus Christ, is God's gift for all people. Furthermore, we believe that this gift is to be shared unconditionally, without regard to age, race, national origin, gender, sexual orientation, gender identity, socioeconomic or family status, or physical or mental ability.

• **Ballard First Lutheran Church • Newsletter • February 2012 •**

**2006 NW 65<sup>th</sup> Street • Seattle • WA • 98117 • 206.784.1306 • www.bflcs.org**

***A Reconciling in Christ Community***

## ☞ Staff ☞

Pastor Erik R. Wilson Weiberg

pastorerik@bflcs.org

Pastor Laurie A. Jones

pastorlaurie@bflcs.org

Administrator: Renee Marquez

office@bflcs.org

Caretaker: Dale Pederson

Treasurer: Julie Millet

Organist: Ed Egerdahl

Minister of Music: Maren Haynes

Accompanist: Jim Fisher

Sunday Nursery: Emily Eddy

## ☞ BFL Childcare Center ☞

**206-784-1307**

Director: Karen Hutchison

## ☞ LYONS ☞

**206-706-5997**

www.roaringlyons.org

Director: Jon Ross

## Church Council ☞

President: Susan Weber

Vice President: Gunbjorg Ladstein

Secretary: Jen Murdock

## ☞ Ministry Coordinators ☞

Childcare: Rob Howard

Christian Ed.: Michele Barnes

Evangelism: Gayle Solberg

Facilities: Scott Jacobson

Fellowship: Carole Underhill

Finance: Jan Holm

Lay Leadership: Wayne Deckman

Personnel: Kathy Johnson

Service: Linda Krippner

Stewardship: Brett Hagen

Worship and Music: Tina Aure

Dear Brothers and Sisters in Christ,

Recently, when "Snow-mageddon" hit, I was reminded of the unpredictability of the weather here in the Pacific Northwest. First of all, living in a convergence zone makes it far more difficult to know exactly when the storm will come and what will happen once it does. Second, there are a lot of other variables that make traversing the hilly roads and streets here far more difficult than other places I've lived, even those places that receive far greater amounts of snow! If at all possible, we're told, it is far wiser to stay off the roads altogether than to risk life and limb. Furthermore, much as we try to prepare and brace ourselves for the onslaught of wind and snow, hail and sleet, rain and cold, there are things we simply cannot know until the storm has come upon us.

Same could be said of life in general. There is a lot that is unpredictable and no amount of preparation will cover all the possible scenarios for what we may have to face. One thing is certain, however, and that is the promise that God remains faithful to us even when we are unfaithful and God will see us through the storms of life no matter what happens along the way.

To be sure, life is fraught with unpredictability. The path of discipleship is not an easy road. There will be obstacles and storms for us to weather along the way. But of this you can be sure: God will be there with us. God's hand will lead us and God's love will abide with us through the storms, through the perils, through the dangers, and through the darkness... leading us into the radiance of Christ's own brilliant light so that we can share Christ's light with those still living in darkness.

Contemporary hymn-writer, Bernadette Farrell, composed the text and music for a hymn which has become a new favorite of mine. The first verse is:

Longing for light, we wait in darkness. Longing for truth, we turn to you.  
Make us your own, your holy people, light for the world to see.

Christ, be our light! Shine in our hearts. Shine through the darkness.  
Christ, be our light! Shine in your church gathered today.

(ELW #715.1)

## ***PASTORAL LETTER (continued)***

Our liturgical seasons of Advent and Christmas have come and gone. Epiphany 2012 will soon be behind us. And, believe it or not, before the month of February ends, the season of Lent will begin. Brace yourselves for the journey to the cross where the shadows and darkness of death will not have the final word, where the Light and Love of Christ will be victorious, once for all. Join us for Ash Wednesday worship at noon and 7 p.m. on February 22nd where we begin the 40-day journey together. Then, beginning February 29th, worship each Wednesday at noon, followed by a soup luncheon or come for soup between 6-7 p.m. and worship with us beginning at 7 p.m. May the light of Christ shine in your hearts this day, and everyday!

In Christ's Light and Love,

*Pastor Laurie*

Pastor Laurie

## ***PASTORAL ACTS FOR THE MONTH OF JANUARY***

**Memorial Service**  
**Oyvind Stokke Witzoe**  
**January 10, 2012**

**Wedding**  
**Amy Morgano and Guy Hardy**  
**January 21, 2012**

## ***PRAYER CONCERNS AND THANKSGIVINGS***

*The following people were in our prayers during the month of January:*

**Cindy Anderson** (friend of Laurie and Ed Egerdahl, breast cancer treatment)

**Max Dale and Jens Gilbertson** (friends of Jenny Boyd, for protection while deployed with the Marines)

**Don Dixon** (father of Anne Dixon, health concerns)

**Donn Fraser** (uncle of Laurie Egerdahl, Donn died this past month)

**Aaron Greig** (friend of Shannon McCarthy, being treated for acute lymphocytic leukemia)

**John Engstrom** (friend of Laurie and Ed Egerdahl, health concerns)

**Klara Hofstad** (in hospice care at Norse Home)

**Dianna Horntvedt** (mother of Pastor Erik, recovering from breast cancer surgery)

**Annika Jacobson** (granddaughter of Scott and Jill Jacobson, health concerns)

**Ron Klein** (brother of Renee, moved to a skilled nursing facility)

**Alex Lewis and Family** (friend of Steve Berry, personal issues)

**Marcia Lofthus** (health concerns)

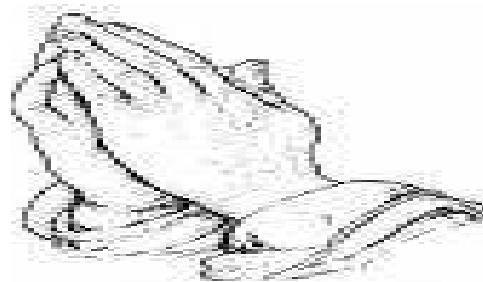
**Pastor Leah Cook McDowell** (friend of Pastor Erik, Leah is in stage 4 of cancer)

**Lucille Parisi** (health concerns)

**Les Phillips** (recovering from eye surgery)

**Harley Solberg** (father of Gayle Solberg, recovering from a broken hip)

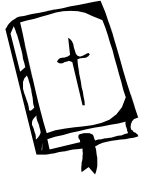
Please call the church office monthly to update the prayer concerns. Having received your reminder, we will gladly keep people on the list and continue our prayers for them.





**Acolytes**

February 5 Ruby Fera and Emily LaFave  
 February 12 Graham Stamey and Sophia Ingham  
 February 19 Claire Cocales and Zoe Barnes  
 February 26 Erika Weber and Sarah Tocher



**Altar Care**

Month of February Dana Cocales, Julie Stewart, Kari Fera



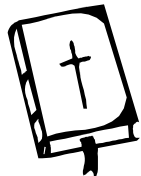
**Assisting Minister**

February 5 Clare Brauer-Rieke  
 February 12 Chris Bloomquist  
 February 19 Chris Bloomquist  
 February 26 Mary Kay Hilmoe



**Communion Assistants**

February 5 Wayne and Max Deckman  
 February 12 Joanne and Jerry Shierk  
 February 19 Kathy Johnson and Nick Host  
 February 26 Jenny Holm and Emily Olsoy



**Counters**

February 5 Karen and Malcolm Unseth, Tina Aure  
 February 12 Bernice Chouery, Jamie Fera, Rosie Hardy  
 February 19 Laurie and Terry McGibbon, Ellen and Geoff Wall  
 February 26 Juliet Dickens and Ken Mingeaud



**Greeters**

Feb. 5 Bernice and Farid Chouery  
 Feb. 12 Joan and Kim Peterson  
 Feb. 19 Gayle Solberg and Steve Dreher  
 Feb. 26 The LaFave Family

**Lectors**

Feb. 5 Nick Host  
 Feb. 12 Carolyn Parisi  
 Feb. 19 Jerry Shierk  
 Feb. 26 Gunbjorg Ladstein



**Ushers**

February 5 Laurie Fladhus and Eric Green, Jennifer and John Schwartz  
 February 12 Kim Peterson, Sylvia Vikingstad, Ray and Ellie Jacobs  
 February 19 Cam and Rosie Hardy, Jenny Holm, Emily Olsoy  
 February 26 Dave Hilmoe, Gunbjorg Ladstein, Marcia Nelson, Jerry Shierk



**Van Drivers**

February 5 Kim Peterson  
 February 12 Dave Hilmoe  
 February 19 Tina Aure  
 February 26 Alex Peterson



**Uniting Hearts and Minds:  
Raising Revenue for the Common Good  
Interfaith Advocacy Day 2012**

**Tuesday, February 14, 8:30 AM - 3:30 PM  
United Churches of Olympia, 110 11th Ave SE, Olympia**

It's time again to register for the annual Interfaith Advocacy Day! IFAD brings together social justice advocates from faith communities and nonprofits across the state of Washington. The day's activities include workshops on issues and advocacy (topics will include the state budget, environment, disability services, and housing/homelessness), legislative briefings, visits with your state legislators, and an interfaith worship. This year the faith community is uniting on Valentine's Day to call on legislators to unite their hearts and raise revenue instead of cutting funding for programs that support the common good.

**REGISTER NOW:** It saves you money and helps us with scheduling meetings and other planning. Cost to attend is \$20 if you register by 5:00 PM on January 31, and \$25 if you register beginning February 1. The registration fee includes a continental breakfast, lunch, and the cost of materials and organizing the event. Some scholarships may be available for those with limited funds--please call or e-mail with your request. We can also help you arrange carpools with others from your area. If you know of faith communities that have vans we can use to carpool, please let us know!

**GET A JUMP ON INTERFAITH ADVOCACY DAY**

University Lutheran Church, along with the University District Ecumenical Parish, is hosting a workshop on Saturday, February 4, 9:30 to 12:00 noon, in order to "Get a Jump on Interfaith Advocacy Day," which will happen in Olympia on Tuesday, February 14. You are encouraged to come to this workshop at ULC and learn about the current issues and bills that are being debated in Olympia so that when you go down to Olympia (or write your legislators), you will be prepared to speak with your legislators about matters pertaining to justice and peace that are priorities of Faith Action Network (FAN). Registration for this free event is at 9:30 a.m. Presentations begin at 10:00 a.m.

**I CARE For February**

The I CARE offering will be taken up on Sunday, February 26<sup>th</sup> and the recipient will be the Compass Housing Alliance. The mission of Compass Housing Alliance is to provide a more efficient and complete spectrum of housing and services to people who are without homes as well as those for whom fair market rents would otherwise be out of their financial reach. Thank you for your generosity.

**You are Invited!**

Compass Housing Alliance Auction 2012

March 10, 2012

6:30pm

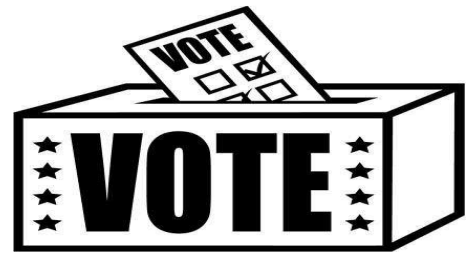


Join us at the Museum of Flight for a fabulous evening of food and fun bidding!

## Bishop's Message

### A Good Creation Of God

by The Rev. Wm Chris Boerger, Bishop



***In short, we confessed that legitimate civil ordinances are good creations of God and divine ordinances in which a Christian may safely take part.<sup>1</sup>***

Last November I participated in the annual visit of ELCA bishops with members of Congress and the White House staff in Washington D.C. This year I began my conversation with them by referencing Article 16 of the Augsburg Confession. I reminded them that Lutherans see government to be a “good creation of God” and as such working for the good of all creation and its creatures.

Frankly that introduction seemed to catch those involved in government by surprise. In the middle of the partisan posturing that is occurring in halls of government this belief that those who are called to the vocation of leader are a gift from God is not part of our political dialog.

As we begin a year that will be dominated by political campaigns and advertising, I pray that we might bring this understanding to our body politic. Understanding that good order and the common good is in fact a gift from God does change the way we talk about government.

This does not mean that one side in our political debates can claim theirs is the God given position. Rather it sees the whole process and all of those we elect as stewards of a call from God for the good of all.

I am convinced that we need to be reminded that as we think about the problems facing the world, our country, state or local community, we are part of something far beyond ourselves. God is at work in the world and we are called to share in that work.

Luther defines the creative activity of God as not just calling the world into being, but also “*daily and abundantly provides shoes and clothing, food and drink, house and farm, spouse and children, fields, livestock, and all property—along with all the necessities and nourishment for this body and life. God protects me against all danger and shields and preserves me from all evil. And all this is done out of pure, fatherly, and divine goodness and mercy, without any merit or worthiness of mine at all!*”

The work of government is God’s work. Government does not have the task of preaching the gospel. That is still the task of the church. Caring for the creation and for all people is the reason that God calls leaders to serve in government.

So, as you exercise your political vocation this year, listen to how those running for office will exercise this call from God for the good of God’s world.

### **A Winter Message from Compass Housing Alliance . . .**

For Compass, snowstorms make for some interesting times. We see more clients than usual coming in just to get warmed up. We have volunteer meal providers, understandably, cancel their food deliveries due to unsafe roads. And, we maintain extended hours at our Day Center and overnight shelters, all in an attempt to make things less dangerous for our clients. This year we even partnered with the Millionaire Club to keep an extra shelter open during the day. This is a time when we are conscious of how truly life-and-death this kind of weather can be for people on the streets. We hope you’ll keep our ministry in mind this winter. We’re always looking for large donations of canned soup to keep on hand when the weather turns. We also appreciate financial contributions to help offset costs of keeping our programs running and providing extra support during stormy weather. Thanks for your continued support. Have a safe winter! Contact us at [www.compasshousingalliance.org](http://www.compasshousingalliance.org) or 206-357-3138.

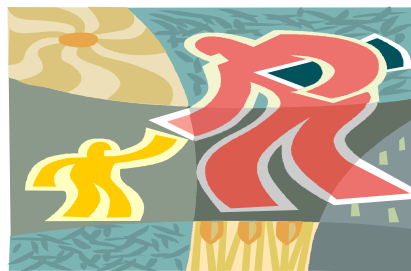
## **FROM OUR CHILDCARE DIRECTOR**

The recent snow days were a big hit with the children! They got to go out and play in the snow twice during the day, and they had great fun. ☺ That Wednesday we only had 12 children, and each day up to Friday, the count doubled in number. Thankfully there were seven of the staff who are able to walk in or bus to work, so that we could be here for the parents who really couldn't miss work. A special thanks to Pastor Laurie for picking up six dozen eggs as part of our lunch on Friday - since the cupboards were getting quite bare by the end of the snow week!

One of the children had a birthday party at the center, and his parents had a magician come for the party. The children were very impressed with the tricks the magician did, letting out oohs and ahhs at the end of each trick. ☺ I have to find out how she did the one with putting the long needle through a balloon without popping it! That was my favorite of the bunch! It's always fun to see their faces light up, in awe and wonder, when they are seeing something for the first time. ☺

Blessings,  
Ms. Karen & Staff

**STEWARSHIP**  
**CONNECTIONS:**  
**Connecting**  
**Sunday to**  
**Monday through**  
**Saturday**



One of my favorite hymns, "Will You Come and Follow Me", which we sang a few weeks ago, sums up the call to discipleship and the choice we have to make every day. Please take a look at some of the words with me.

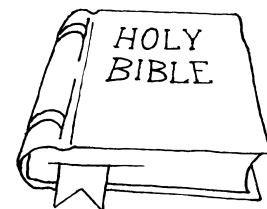
Will you come and follow me if I but call your name?  
Will you go where you don't know and never be the same?  
Will you let my love be shown? Will you let my name be known?  
Will you let my life be grown in you and you in me?  
Will you leave yourself behind?  
Will you care for cruel and kind?  
Will you risk the hostile stare?  
Will you let me answer prayer in you and you in me?  
Will you admit to what I mean in you and you in me?  
Will you love the "you" you hide?  
Will you quell the fear inside?  
Will you use the faith you've found to reshape the world around?

These are the questions God is asking of us. They are God's call to discipleship. Maybe one or more of these questions stand out as particularly meaningful to you or really got you as you heard it. If so, I invite you to circle, underline or highlight those words that stood out. If your answer to any of these questions is yes, see if you can live it for the day.

In Peace,  
Ann Maki

### **Opportunities to Share Your Faith**

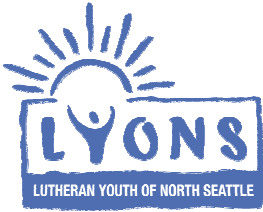
The Christian Education Committee would like to invite all interested persons to attend a Vacation Bible School planning meeting on Tuesday, January 31<sup>st</sup> at 7pm in the church office building.. Also, the Christian Education Committee is looking for new members. If you are interested in either of these opportunities or have any questions, please contact Michele Barnes at: [nmbarnes2@comcast.net](mailto:nmbarnes2@comcast.net) or Pastor Laurie.



### **Mark your Calendars for the** **Blessing of the Fleet**

This year commemorates the 84<sup>th</sup> Annual "Blessing of the Fleet." Make your plans to join us at the Fishermen's Memorial Site at Fishermen's Terminal on Sunday, March 18<sup>th</sup> at 2:00pm.





# *Lutheran Youth of North Seattle*

## **February LYONS Events**

### **3...2...1...Action!!**

It's show time! Dinner Theater Auditions will be held February 7<sup>th</sup>, 8<sup>th</sup> from 7:30pm-9:00pm and February 9<sup>th</sup> from 4:00pm – 6:00pm at the Den. Whether it's making sets, sewing costumes, playing in the band or acting on stage, if you're a high school student we want you. Come out to auditions to learn how you can participate and to get more information about this exciting annual event.

### **Mark your calendars for Dinner Theatre Performances**

Shows will be April 27<sup>th</sup> – 29<sup>th</sup> & May 4<sup>th</sup> – 6<sup>th</sup>.

### **LYONS Superbowl Party!!**

Sunday, February 5 starting at 3:30pm. Join us at the Den from kickoff to the final seconds of Superbowl XLVI. We'll chow down on pizza and wings and cheer on the teams.

### **Drop in during the week!**

Did you know the Den is open for you to hang out during the week? Now, all LYONS (middle and high schoolers) and friends can come every Tuesday and Wednesday after school from 2:30-5:00 (12:30-5:00 on early dismissal days). We play games, eat snacks, and have a time to just chill. Hey, the rest of your day is so busy, why not take some you time and relax at the Den!

### **LYONS Middle School on Sundays**

It's a new year and a new time for middle school LYONS to get together on Sundays. We've moved the time up to 3:30pm-5:00pm at the Den, so you can get home in plenty of time for dinner. Don't worry...only the time has changed. The fun...let's just say, it's still awesome! Check the LYONS calendar online for details: [www.roaringlyons.org](http://www.roaringlyons.org).

### **LYONS has expanded our Board!**

Do you feel led to encourage, foster, and promote opportunities for youth to participate in a Christ-centered community of worship, witness, service, education, and fun? If so, this opportunity is for you. LYONS is looking for Board representatives from each member church to help LYONS make a difference in 2012! Only Two members still needed!

### **LYONS Annual Meeting**

LYONS Annual Meeting will be Sunday, March 4<sup>th</sup> at 5:00pm at Ballard First Lutheran. Please join us to hear about the exciting accomplishments LYONS had in 2011 and what is in store for 2012. Dinner will be served. We welcome anyone interested in the goals and work of LYONS to attend.

**Mid-week Noontime Bible Study Continues**

The Wednesday Bible Study will continue on Wednesday, February 1<sup>st</sup>, 8<sup>th</sup>, and 15<sup>th</sup>, at 12pm in Haavik Hall. At the request of the Fall participants, we will be studying the psalms – from songs of laments to praise – there's something for everyone! New participants are always welcome.

**Thursday Evening Bible Study**

The Thursday evening Bible Study continues to meet on the Thursdays in February. Join us in Haavik Hall at 6:30pm. Choir rehearsal follows.

**Special Congregational Meeting**

There will be a special congregation meeting in Haavik Hall immediately following the March 4<sup>th</sup> Sunday Service. The purpose of the meeting is to vote on adopting amendments to our constitution to make it consistent with amendments adopted at the 2011 ELCA Churchwide Assembly. Copies of the proposed amendments will be distributed at the Annual Meeting and will be available in the church office, and by email if requested. If you would like more information prior to the meeting, please contact Gunbjorg Ladstein at 783- 2926 or gunbjorgladstein@comcast.net.

**Recycling Opportunity**

Here is an opportunity to be "green" and get rid of old working or non-working computers, monitors, television sets, cell phones, cables etc. Clean out the spare bedroom, home office, garage, even donate a few items taking up space at work. Get organized in 2012 and recycle. Be a hero to your relatives and friends, neighbors and co-workers by gathering up and delivering items to Shoreline Community College, 16101 Greenwood Avenue North • Shoreline, WA 98133-5696 Tel: (206) 546-4101, on Saturday, February 18, between 10am and 3pm, in the parking lot of the Student Union Building "PUB".

**BFL Oscar Party**

Cinemaphiles, mark your calendars. The BFL Movie Club is hosting its fourth annual Oscar night potluck party on Sunday February 26<sup>th</sup> beginning at 5pm at the home of Marcia Nelson (2649 NW 96<sup>th</sup> St./206-783-9895). Popcorn and Oscar ballots will be provided. Be sure to wear your best red carpet attire for the event of the season.

**BFL Book Club**

BFL Book Club will meet on Monday, February 20<sup>th</sup> at 7:00pm in the church office building.

**Coffee Hour Hosts Needed**

Have you considered signing up to host one of our fellowship hours following the 10:00 Sunday service? Or, bringing goodies to stock our freezer for "No Host" Sundays? This fellowship time is enjoyed by so many; however, we are always in need of people to serve as hosts and hostesses and to pitch in with set-up/clean-up. So, grab a friend or two and sign up today!

**Ash Wednesday and Mid-week Lenten Worship Services**

This year's Lenten journey begins on Wednesday, February 22<sup>nd</sup> with the Imposition of Ashes and Service of Holy Communion. Worship services will be at 12 noon and 7 p.m. Then beginning Wednesday, February 29<sup>th</sup>, our Lenten schedule will be as follows: 12:00pm worship followed by a soup luncheon, and at 6:00pm, a simple soup supper followed by worship at 7:00pm. Lenten services continue on March 7<sup>th</sup>, 14<sup>th</sup>, 21<sup>st</sup>, and 28<sup>th</sup>. (Please note: There is no soup lunch/supper on Ash Wednesday, however soup providers are needed for the following weeks. Sign up in Haavik Hall.)

## FINANCIAL HISTORY REPORT

### December 2011 Financial Report General Fund

	December Actual	December Budget	Year To Date Actual	Year To Date Budget	Year To Date Variance
Envelope/ Loose Giving	\$34,123.78	\$23,333.37	\$294,377.14	\$280,000.00	\$14,377.14
Other Income	\$102,487.87	\$89,616.52	\$171,876.24	\$174,800.00	(\$2,923.76)
<b>Total Income</b>	<b>\$136,611.65</b>	<b>\$112,949.89</b>	<b>\$466,253.38</b>	<b>\$454,800.00</b>	<b>\$11,453.38</b>
<b>Expenses</b>	<b>\$68,762.08</b>	<b>\$41,639.92</b>	<b>\$480,985.76</b>	<b>\$503,074.75</b>	<b>(\$22,088.99)</b>
<b>Surplus / (Loss)</b>	<b>\$67,849.57</b>	<b>\$71,309.97</b>	<b>(\$14,732.38)</b>	<b>(\$48,274.75)</b>	<b>\$33,542.37</b>
<b>Cash Balance</b>	<b>\$66,828.45</b>				

Each month, this report will show income and expenses for both the current month and year-to-date. In addition, the last column shows the variance (actual vs. budget). We are also reporting our current general fund balance. We hope this helps you to better understand our overall financial situation. If you have any questions or feedback, please contact: Julie Millet, Financial Secretary, or Jan Holm, Finance Chair.

In December, these are some of the ways our financial support to the mission and ministry budget became Christ's hands and feet in the world: provided Christmas gifts for Compass Housing Alliance families and hygiene items for clients at Ballard Food Bank, Christmas caroling to homebound members, hosted Wednesday evening Advent worship services and soup suppers, provided space for Julefest, hosted WELCA, held BFL Childcare Center Christmas Program, held BFL Christmas Potluck, enjoyed a Sunday School/ Adult choir program "The Christmas Visitor," provided space for Market Street Singers, Girl Scouts, and Boy Scouts, held Christmas Eve Manger and Candlelight Services and Christmas Day service of carols and communion

### Capital Campaign II Update December – 2011

**Total Loan Balance as of 1/1/2011      \$225,627**

Month	Year	Monthly Giving	Loan Balance
January	2011	\$2,535	\$224,290
February	2011	\$5,184	\$220,182
March	2011	\$5,234	\$216,121
April	2011	\$2,600	\$214,633
May	2011	\$2,535	\$213,238

June	2011	\$2,535	\$211,798
July	2011	\$2,535	\$210,388
August	2011	\$2,535	\$208,970
September	2011	\$2,535	\$207,510
October	2011	\$3,535	\$205,077
November	2011	\$3,535	\$202,596
December	2011	\$24,190	\$179,483

Only a part of the payment is applied to the principle. The rest is interest. The monthly payment is based on the amount of capital campaign contributions received from the previous month. Thank you for your continuous generous giving.



**BALLARD FIRST LUTHERAN CHURCH**  
2006 Northwest 65<sup>th</sup> Street  
Seattle, WA 98117

NON-PROFIT  
ORGANIZATION  
US POSTAGE  
**PAID**  
SEATTLE, WA  
PERMIT 5736

### **Sunday Morning Worship Schedule**

9:00am Education + + + 10:00am Worship  
Coffee Hour Fellowship following Worship  
Nursery care available throughout the morning

### **Special Events in February**

**Ash Wednesday – February 22<sup>nd</sup>**  
**Worship at Noon and 7 p.m.**

**Mid-week Lenten Worship**  
**Begins Wednesday, February 29<sup>th</sup>**

**Daytime: Noon worship, followed by soup luncheon**  
**Evening: Soup Supper at 6pm, followed by worship at 7pm**